



LECTURE

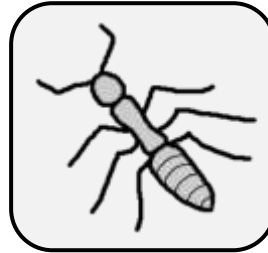
Assemblage syllabique

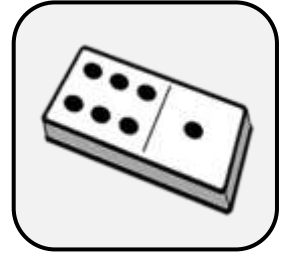
[i]

1. Coche la case qui correspond à la syllabe où tu entends [i].

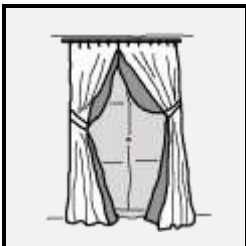




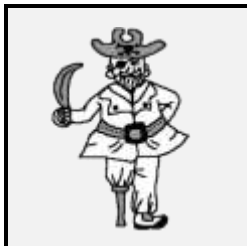




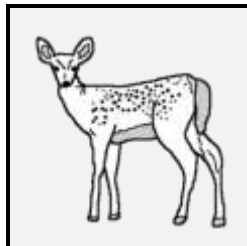
2. Colorie la syllabe que tu entends au début de chaque mot.



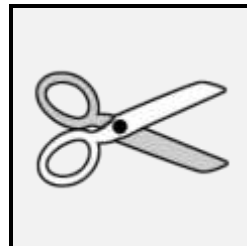
li ti ri mi



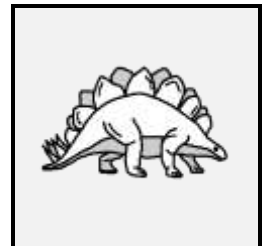
di pi ri ti



bi di li ti



ni mi ri ci



bi li di fi

3. Ecris la syllabe manquante : pi fi mi bi.



bo _ ne



cham _ gnon



che _ se



con _ ture

4. Barre le mot qui ne contient pas la syllabe indiquée.

mi

midi

fourmi

chemise

navire

cheminée

ami

miche

li

livre

salive

olive

maline

sali

limace

tigre

ri

sourire

farine

niche

aride

pari

mari

rideau