

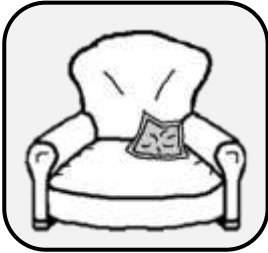
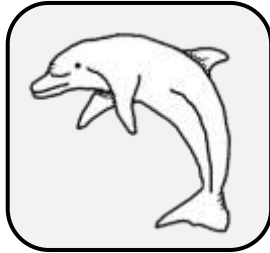
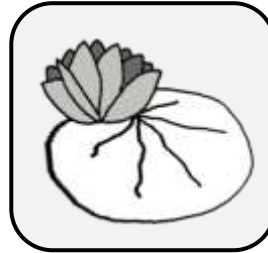


LECTURE

Assemblage syllabique

[f]

1. Coche la case qui correspond à la syllabe où tu entends [f].

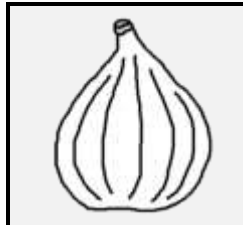

 

 

   

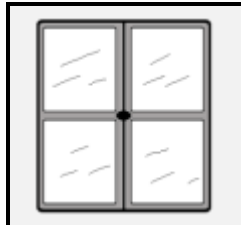
2. Colorie la syllabe que tu entends au début de chaque mot.



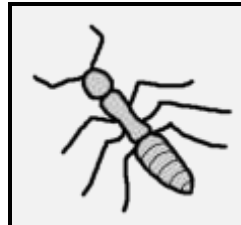
fa fo fé fi fou



fa fo fé fi fou



fa fo fé fi fe



fa fo fé fi fou



fa fo fé fi fou

3. Ecris la syllabe manquante : fan - fe - fi - fou



con \_ ture



\_ rchette



ca \_ tière



\_ tôme

4. Forme un mot avec les syllabes contenues dans le sac et écris-le.





